

(from previous page)

Store N1 in ROUT (sum of words in all C blocks so far read)

Transfer copies of last word of block (MOM5) to SHU+2 (E2M7) and Q6

6 < I6 < M6 < words requested (D24-47 of E1)?

NO

Set 7 in N1

RW43

Add /RPBA/ (AEO) to I6 and M6

Transfer I6, M6 to Q5

RWL5 (p.27) (OUT 1 may find store locked out)

Forward read C block (PIAQ5)

RWL5 (p.27) (return at end of read)

Parity in C block?

YES

Set 8 in N1

RB7F (p.82)

NO

RW44

Store I5 in M6 and M5-I5 in O6 setting I6=1

Fetch ROUT

YES

O6 = 0?

NO

Add next word of C block to N1, modifying Q6 (MOM6Q;+;)

O6 = 0?

NO

YES

W114

Fetch last word of C-block (E2M7) and extract DO-16

YES

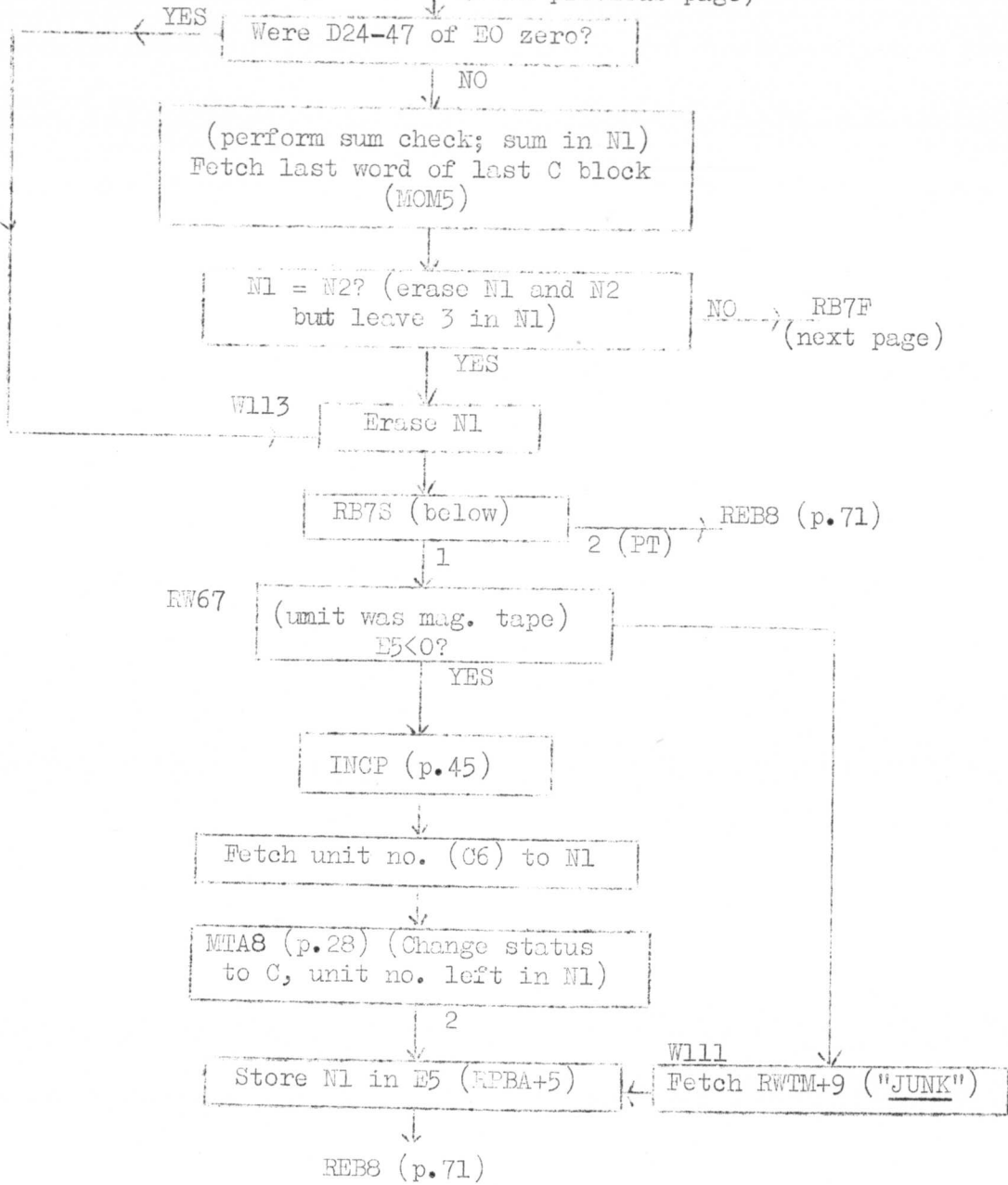
N1=0 (any more C blocks to be read)?

NO

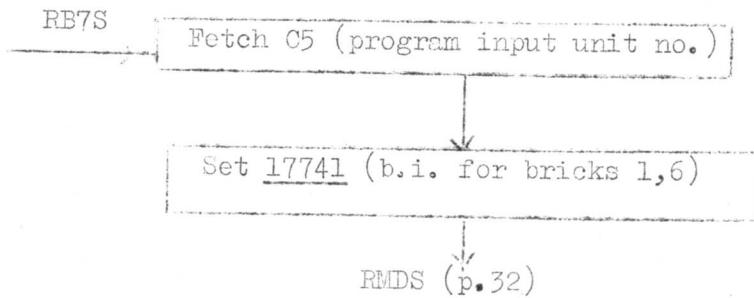
Clear D24-47 of RPBA (EO)

next page

(from previous page)



SUBROUTINE RB7S (DISPOSE OF PROGRAM INPUT UNIT)



RB7F (FAILURE IN STEP 8)

